



WORLD'S BEST
ALLOY BULLBARS

East Coast Bullbars (ECB Pty Ltd)

Tel: 07 3897 5700

Fax: 07 3283 1168

ecb@ecb.com.au www.ecb.com.au

29 Snook St
Clontarf QLD 4019

Australia

Po Box 122
Margate QLD 4019
Australia

BC53SY

REPLACES: 14.03.08

REVISED: 11.07.10

FITTING INSTRUCTIONS

CHEVROLET SILVERADO MY08 (2/07on) WINCH COMPATIBLE BIG TUBE™ BAR (WITH FOG LAMPS) VEHICLE FRONTAL PROTECTION SYSTEM (VFPS) FOR AIR BAG & ADR COMPLIANT VEHICLES

Check installation hardware before commencing.

1. Lift bonnet
2. Remove grille to radiator support cover, eight push pull plastic clips.
3. From air opening on bumper, disconnect air damming from front bumper. (Five plastic Christmas tree plugs.)
4. From under bumper, remove bumper stays. One 15mm nut (per side) from bumper end and two 15mm bolts (per side) from chassis end. **See figure 1.** Disconnect fog lights.
5. Remove two 21mm bolts from bumper brackets. Access from behind grille. **See figure 2.**
6. Remove bumper from vehicle.
7. Remove bumper brackets and tow hook from front of chassis rails (two 21mm nuts on factory “u” bolts) and two 19mm bolts and nut from tow hook. **Note:** One 19mm bolt from underside of chassis.
8. Fit ECB Steel inner mount brackets (supplied) to inside of chassis rails using three ½ x 5 ½ bolts and flat washers and one 1 x 1 ½ bolt, flat washers, spring washers and nut (per side)(supplied). Fit ECB Steel outer mount brackets to outside of chassis rail. Attach using flat washer, spring washer and nut (supplied). On lower bolt place space tube on inside of chassis rail over bolt. **See figure 3.** Tighten bolt on underside of chassis only.
9. Fit fairlead rollers to side of winch frame with rectangular cut out using ½ x 1 bolt flat washers, spring washers and nut (place bolt thru from inside to front of mount).
10. Remove lower tie bar from winch and refit to back of winch using 6mm Allen key. Place winch into winch frame with motor end to passenger’s side of frame. **Note:** Winch rope will feed from underside of winch. Attach to underside of winch frame using four 7/16 x 1 ½ bolts, flat washers and spring washers supplied with winch. Fit two 7/16 x 1 ½ bolts, flat washers and spring washers (supplied) to winch from rear of winch frame. Ensure wire winch rope is passed thru fairlead rollers upon installation of winch. Fit hook to wire rope. **See figure 4.**
11. **For 12,000lb Warn Winch** - Fit control box to winch motor. Clamp in position with large hose clamps (supplied with winch) socket on control box mounted vertically on winch. Connect cables to motor as indicated. **NOTE:** Motor ground terminal bolts to 8mm hole at front. Ensure good contact. Use M8 x 25 bolt, nut, flat and spring washers (supplied).
12. **For 15,000lb Warn Winch** – Fit ECB control box bracket (supplied) to inside of winch mounting bracket on passengers side. Use two 3/8 x 1 ¼ bolts, nuts, flat and spring washers (supplied). **TIGHTEN** parallel to roller fairlead. Using original 15,000lb bracket bolted to 15,000lb control box, bolt to ECB bracket using two 3/8 x 1 ¼ bolts, nuts, flat and spring washers (supplied). Align socket on control box to sit vertically on winch. **TIGHTEN IN POSITION.** Connect cables to motor as indicated. **See figure 5.**



**WORLD'S BEST
ALLOY BULLBARS**

East Coast Bullbars (ECB Pty Ltd)

Tel: 07 3897 5700

Fax: 07 3283 1168

ecb@ecb.com.au www.ecb.com.au

29 Snook St
Clontarf QLD 4019
Australia

Po Box 122
Margate QLD 4019
Australia

13. With the help of a second person, place winch frame onto inner steel mounting brackets, between outer steel mounting brackets. Attach to mounts using four ½ x 1 ½ bolts, flat washers, spring washers and nuts on lower points of mounts. Tighten all bolts on inner steel mount only. **See figure 6. WARNING: Winch and frame are very heavy, two person lift is required.**
14. Feed winch wiring to battery. Ensure wiring is protected from sharp edges and other damage. Test winch for correct operation.
15. Splice ECB indicator/park light and fog light wiring into original wiring loome. Use cable locks (supplied). Wiring is accessible under headlamps. If original fog lamps not fitted, an accessory wiring kit will be required. **See figure 7 and 8.**
16. Attach infill trim (supplied) to top sides of ECB Protection Bar as far as the cut out for the grille opening. Trim infill to suit ear angle of bar. Attach 6mm clip lock trim neatly between infill panels. **See figure 9.**
17. Fit ECB LED indicator / park lights into protection bar as per instructions supplied with the LED indicator kit. **NOTE: Ensure park light is to outside. See figure 10.**
18. Attach ECB fog lights to protection bar. Place M6 x 20 bolts, spring washers (supplied) through light mount from inside and attach nut to top. Slide assembly into light mount in Protection bar and centralize light to hole. **See figure 11. Tighten Firm Only. NOTE: Do not fit ECB light trims to protection bar at this point.**
19. Attach ECB Protection Bar to outside of steel mounting brackets. Use two ½ x 1 ½ bolts and one ½ x 2 ½ bolt to lower hole, flat washers, spring washers and nuts (per side). **Finger tighten only. Tighten all steel mounting brackets to chassis.**
20. Align ECB Protection Bar to vehicle. **Tighten all bolts. See figures 12 and 13.**
21. Connect ECB indicator/park lights and fog lamps. Ensure wiring is routed in such a manner to avoid any sharp edges etc and fog lamps are pointed forward and at a slightly downward angle. Check for correct operation. Fit Fog light trims (supplied), large side to inside of bar.
22. Trim lower wheel arch splash guard level with bottom of skirt on Protection bar. Cuts will be required to allow splash guard to sit neatly behind Side of Protection Bar.

ENSURE NUMBER PLATE IS CLEARLY VISABLE

Note: When fitting/refitting the licence plate to the vehicle, ensure there is no obstruction to licence plate vision in accordance with local authorities. If required relocate licence plate to an alternate location.

Further VFPS Notes:

- a) Do not attach VFPS to the vehicle using anchorages not intended for this purpose (e.g. engine mounting bolts).
- b) Do not use this product for any vehicle make or model, other than those specified by the VFPS manufacturer.
- c) Do not remove the plaque or label from the VFPS.
- d) Do not modify the structure of the VFPS in any way.
- e) No accessory or fitment should project forward of the VFPS forward profile.
- f) **ENSURE THESE INSTRUCTIONS ARE LEFT WITH VEHICLE OWNER AND/OR OPERATOR.**

IMPORTANT INFORMATION

Periodically check bolts and nuts for correct tightness, especially if travelling on rough roads



**WORLD'S BEST
ALLOY BULLBARS**

East Coast Bullbars (ECB Pty Ltd)

Tel: 07 3897 5700

Fax: 07 3283 1168

ecb@ecb.com.au www.ecb.com.au

29 Snook St
Clontarf QLD 4019
Australia

Po Box 122
Margate QLD 4019
Australia

FITTING KIT

2 – ECB Outer Steel Mounting Brackets	2 – M8 flat washers
2 – ECB Inner Steel Mounting Brackets	1 – M8 spring washer
1 – ECB Steel Winch Frame	1 – M8 nut
1 – ECB Steel control box mount	4 – 3/8 x 1 ¼ bolts
2 – ECB Steel chassis spacer tubes (15 nb x 78mm long)	8 – 3/8 flat washers
6 – ½ x 5 ½ bolts	4 – 3/8 spring washers
10 – ½ x 1 ½ bolts	4 – 3/8 nuts
2 – ½ x 1 bolts	1 – 1600mm length, 6mm clip lock trim.
2 – ½ x 2 ½ bolts	2 – 600mm length, infill trim
40 – ½ flat washers	1 – ECB LED Indicator / Park light kit
20 – ½ spring washers	1 – Pair ECB Fog Lamps.
20 – ½ nuts	2 – Fog lamp surrounds.
2 – 7/16 x 1 ½ bolts	2 – M6 x 20 bolts.
4 – 7/16 flat washers	2 – M6 flat washers.
2 – 7/16 spring washers	2 – M6 spring washers.
2 – 7/12 nuts	2 – M6 nuts
1 – M8 x 25 bolt	10 – Cable locks
6 – 300mm cable ties	



Figure 1: Stay mount to chassis, two 15mm bolts

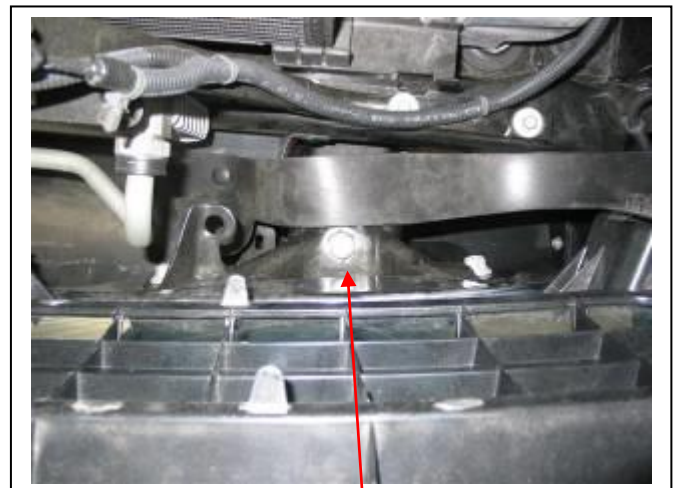


Figure 2: 21mm bolt looking down from behind grille



**WORLD'S BEST
ALLOY BULLBARS**

East Coast Bullbars (ECB Pty Ltd)

Tel: 07 3897 5700

Fax: 07 3283 1168

ecb@ecb.com.au www.ecb.com.au

29 Snook St
Clontarf QLD 4019
Australia

Po Box 122
Margate QLD 4019
Australia



Figure 3: View of mounts no chassis with winch attached



Figure 4: Placement of winch in mount



Figure 5: Direction and mounting of winch control box



Figure 6: Mounting of winch frame to chassis mount



Figure 7: Wiring harness under driver's headlamp



Figure 8: Infill trim finishing point



**WORLD'S BEST
ALLOY BULLBARS**

East Coast Bullbars (ECB Pty Ltd)

Tel: 07 3897 5700

Fax: 07 3283 1168

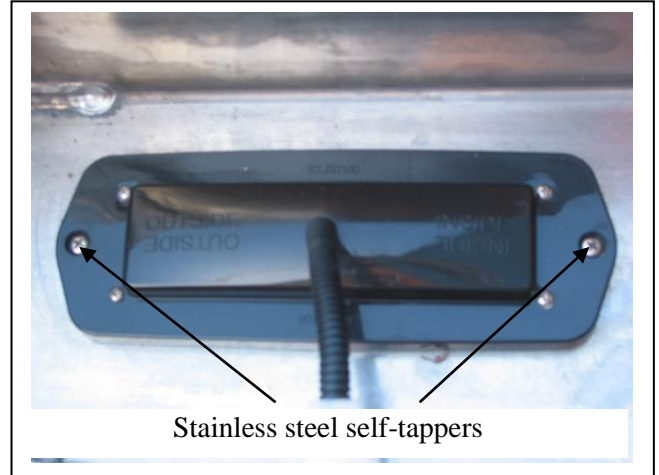
ecb@ecb.com.au www.ecb.com.au

29 Snook St
Clontarf QLD 4019
Australia

Po Box 122
Margate QLD 4019
Australia

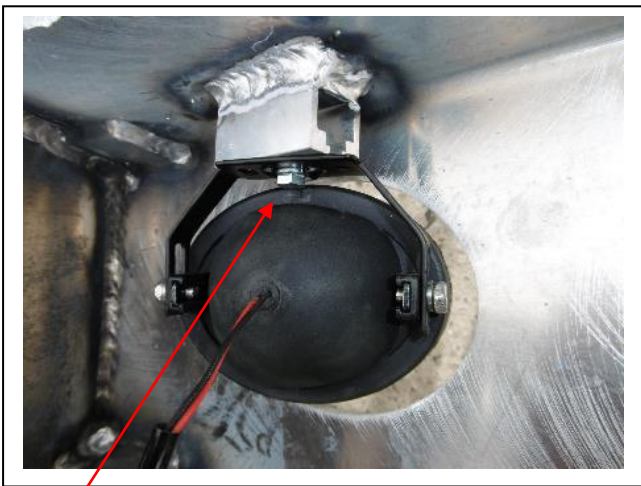


Figure 9: Overall view, rear of alloy bar



Stainless steel self-tappers

Figure 10



M6 bolt

Figure 11



Figure 12: Winch Bar, front view



Figure 13: Winch bar, side view

We value your comments



**WORLD'S BEST
ALLOY BULLBARS**

East Coast Bullbars (ECB Pty Ltd)

Tel: 07 3897 5700

Fax: 07 3283 1168

ecb@ecb.com.au www.ecb.com.au

29 Snook St
Clontarf QLD 4019
Australia

Po Box 122
Margate QLD 4019
Australia

Dear Fitter,

ECB would like to know how you went with the installation of this product. We value your comment and may need to contact you to clarify some details so please complete your contact details clearly.

We would appreciate if you could complete as many of the following details as possible.

Your Name:	Your contact No.
Product Part No.	Product Invoice No.
Product Description:	Make, model, and year of vehicle:
Product Work Order No.	Company your from/Company product purchased from:

Date of Fitment: ____/____/____

Was the fitting hardware supplied complete? Yes No

If no what was not supplied

Did the installation go well? Yes No

Please provide comments

Please draw diagrams if you need to.

Post to
Reply Paid 122
PO Box 122
Margate QLD 4019

Fax to
(07) 3283 1168

DESPATCH CHECKLIST



WORLD'S BEST
ALLOY BULLBARS

East Coast Bullbars (ECB Pty Ltd)

Tel: 07 3897 5700

Fax: 07 3283 1168

ecb@ecb.com.au www.ecb.com.au

29 Snook St
Clontarf QLD 4019

Australia

Po Box 122
Margate QLD 4019

Australia

BC53SY

ICZBKCC53



Work Order #	
Finish:	
Transport:	
Due Date:	

- 2 – ECB outer steel mounting brackets.
- 2 – ECB inner steel mounting brackets.
- 1 – ECB steel winch frame.
- 1 – ECB steel control box mount.
- 2 – ECB steel chassis spacer tubes (15nb x 78mm long).
- 1 – Bolt Kit.
- 1 – ECB Indicator / park light kit.
- 1 – Pair ECB fog lamps.
- 2 – Fog lamp surrounds.
- 1 – 1600mm length 6mm clip lock trim.
- 2 – 600mm lengths infill trim.
- 2 – ECB overrides – **Fitted to Bar.**
- 6 – 6mm air scoops – **Fitted to Bar.**

**See other side of
this page for
photos of all
mounts**



Is this product “the best it can be” Yes _____ / _____
Wrapper’s initials / Checker initials

If **NO** fix before continuing

All parts checked and completed by:

Nut and bolts: _____ Date __/__/__

Order control: _____ Date __/__/__

Final wrap check: _____ Date __/__/__



East Coast Bullbars (ECB Pty Ltd)

Tel: 07 3897 5700

Fax: 07 3283 1168

ecb@ecb.com.au www.ecb.com.au

WORLD'S BEST
ALLOY BULLBARS

29 Snook St
Clontarf QLD 4019
Australia

Po Box 122
Margate QLD 4019
Australia

